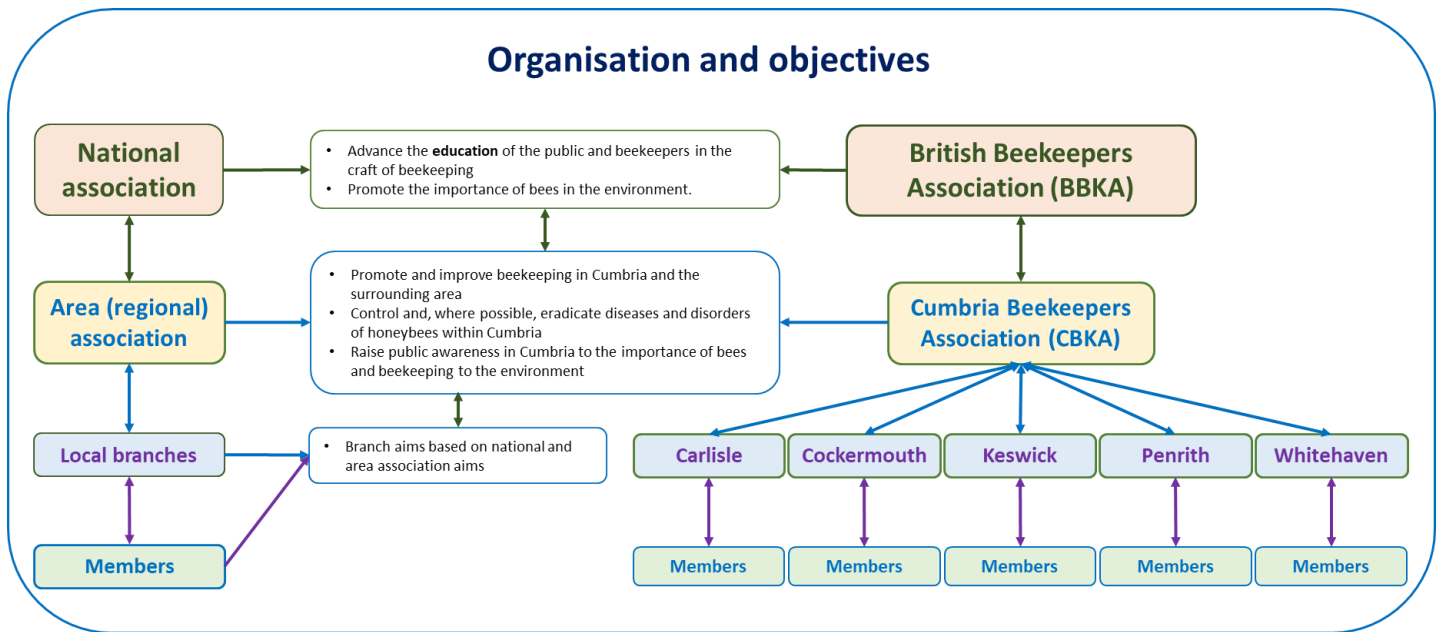


Organisation of the British Beekeepers Association



British Beekeepers Association (BBKA)

The British Beekeepers Association, based at the National Agricultural Centre, Stoneleigh, Kenilworth, is the national umbrella organisation for all member beekeepers in the UK.

The main remit of the BBKA is education, and regular informative and training events for beekeepers or those interested in beekeeping, together with national events such as the Honey Show, are organised.

The BBKA also manages examinations and associated syllabi; organises insurance for members; provides a list of potential apiary locations; raises awareness of Asian hornets; and provides advice for the general public, including information on swarms.

The monthly BBKA News is produced by the BBKA and distributed to all current members.

Cumbria Beekeepers Association (CBKA)

Area (or regional) associations are generally organised at county level, are the canopy establishments for the branches, and act as a conduit for communication between members, branches and the BBKA.

The aims of CBKA are based on those of the BBKA:

- The promotion and improvement of beekeeping in Cumbria and the surrounding area
- The control and where possible the eradication of diseases and disorders of honeybees within Cumbria
- The raising of public awareness in Cumbria to the importance of bees and beekeeping to the environment.

The CBKA provides financial assistance to the branches for e.g. purchase of equipment and grants for events. Area associations also manage the local BBKA examination for their members.

One of the elected CBKA officer represents our area at the BBKA Annual Delegate Meeting with voting rights on behalf of our area members.

A regular area newsletter, the Bee Times, is circulated to all CBKA members.

Branches: Carlisle, Cockermouth, Keswick, Penrith, Whitehaven

BBKA membership is generally organised via a local branch.

Branches usually have a working apiary for the benefit of their members; organise regular meetings, training sessions and apiary visits throughout the year; and may have a selection of equipment for hire and books for loan.

The aims of a branch are based on those of the BBKA and CBKA.

Committees and officers

Elected officers, comprising president, vice-president, secretary, and treasurer, exist at area level. CBKA also has an executive committee, consisting of representatives from each branch, with an elected chairman and vice-chairman, and there are several other officers, such as examinations secretary, eR2 manager. Branches generally have similar committee members, and may also have trustees and other posts e.g. apiary manager, membership secretary.